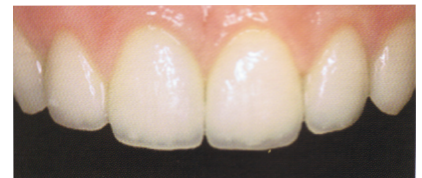


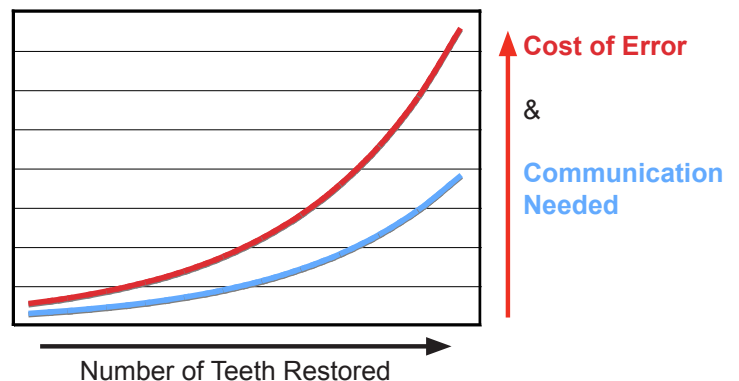


Why is a cosmetic case different ?

1 In multiple unit anterior cases, "ideal" can mean a broad range of possibilities for you, your patient and your technician. All of these can be considered as "ideal".



2 As the number of teeth involved in the case goes up, the need for communication goes up exponentially. In addition, the cost of error to your practice also increases, even with our *no hassle remake policy*.



Our roadmap hinges on a physical model that has been approved by the Doctor and the patient. If a 2D picture is worth a 1,000 words, then *a 3D physical model is worth 10,000 words.*

This way to Roadmap →



Determine Patient Expectations

Interview the patient to determine what he/she has in mind. Understanding what the patient desires is always the first step to a successful case. Without this, we can deliver a perfect case that the patient rejects.

Create a physical mock-up

The best way to confirm expectations is to create a mock-up. This can be done indirectly with a lab diagnostic wax-up, or directly with composite or acrylic.

Finalize the physical mock-up

Finalize the size and shape of the physical mock-up. Your technician will need a copy with the case. Either the wax-up, impression of direct composite, or impression of previous restorations.

Warning

Without a physical model of the goal, the patient may be disappointed with the results

Prep the Teeth

We can create a Siltek putty matrix to help guide reduction. We can also provide a temp matrix based on the mock-up

Impressions

The more teeth in the impression the better. We recommend Full arch polyvinyl upper and lower, with cross-hair bite and c/o bite registration.

Rx and additional information

Shade and translucency are required. Any characterizations or other special instructions can be written. Digital photos are good for showing the technician what you want.